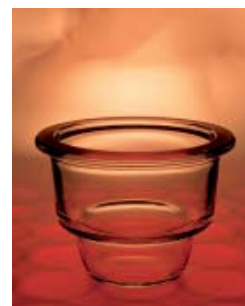
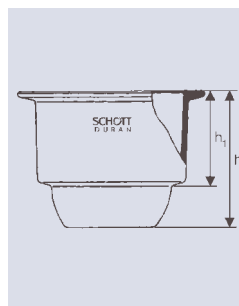


Best.-Nr. Cat. No.	DN	h	h ₁	ID Flansch ID flange	AD Flansch OD flange	ca. Vol. approx. vol.	Original- pckg./Stück Stand. pack/quantity
		mm	mm	mm	mm	l	
Klarglas/clear glass							
24 770 46	100	112	58	118,5	153 +/-2	0,7	1
24 770 57	150	154	81	172	215 +/-2	2,4	1
24 770 61	200	202	115	222	270 +/-2	5,8	1
24 770 66	250	235	120	272	320 +/-2	10,5	1
24 770 69	300	283	150	332	380 +/-2	18,5	1



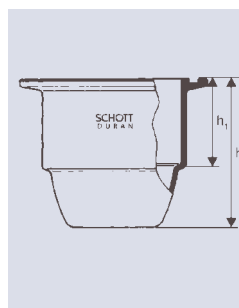
Exsikkator-Unterteile
mit Planflansch, ohne
Anschluss, für Deckel
aller Typen, DIN 12 491

**Parties inférieures
de dessiccateurs**
à rodage plan, sans rac-
cord, pour couvercles de
tous types, DIN 12 491

Desiccator bases
with flat flange, for all
types of lids, DIN 12 491

Base para desecadores
con brida plana, sin
conexión, para cualquier
tipo de tapa, DIN 12 491

Best.-Nr. Cat. No.	DN	h	h ₁	ID Flansch ID flange	AD Flansch OD flange	ca. Vol. approx. vol.	Original- pckg./Stück Stand. pack/quantity
		mm	mm	mm	mm	l	
Klarglas/clear glass							
24 773 61	200	202	115	222	270 +/-2	5,8	1



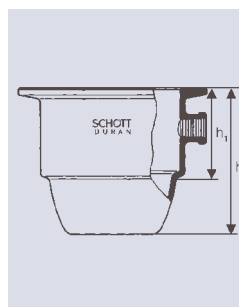
Exsikkator-Unterteile
mit Ringnutflansch,
passend für alle Deckel

**Parties inférieures
de dessiccateurs**
bride à rainure circulaire,
convenant à tous les
couvercles

Desiccator bases
with ring-grooved
flange, for all types
of lids

Base para desecadores
con brida con ranura,
para cualquier tipo de
tapa

Best.-Nr. Cat. No.	DN	h	h ₁	ID Flansch ID flange	AD Flansch OD flange	ca. Vol. approx. vol.	Original- pckg./Stück Stand. pack/quantity
		mm	mm	mm	mm	l	
Klarglas/clear glass							
24 771 46	100	112	58	118,5	153 +/-2	0,7	1
24 771 57	150	154	81	172	215 +/-2	2,4	1
24 771 61	200	202	115	222	270 +/-2	5,8	1
24 771 66	250	235	120	272	320 +/-2	10,5	1
24 771 69	300	283	150	332	380 +/-2	18,5	1



Exsikkator-Unterteile
mit Planflansch, mit
NS-Tubus, Typ NOVUS

**Parties inférieures de
dessiccateurs, à rodage
plan, avec tubulure RIN,
type NOVUS**

**Desiccator bases, with
plane flange, with NS
side outlet, NOVUS type**

**Base para desecadores
con brida plana, con
tubuladura NS, tipo
NOVUS**