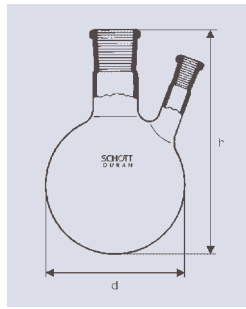




Zweihals-Rundkolben
mit Normschliffen,
Seitenhals schräg,
DIN 12 394

**Flasks, round bottom,
two necks**
with standard ground
sockets, side neck
angled, DIN 12 394



**Ballons à fond rond
à deux cols, avec joints
à rodage standard,
col latéral oblique,
DIN 12 394**

**Matraces fondo
redondo, con dos bocas
con esmerilados
normalizados,
boca lateral inclinada,
DIN 12 394**

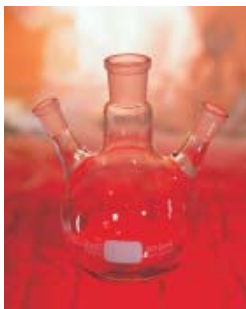
Best.-Nr. Cat. No.	Inhalt Capacity ml	Mittelhals NS Centre socket size	Seitenhals NS Side socket size	d mm	h mm	Originalpckg./Stück Stand. pack/quantity
24 183 26 ¹	100	24/29	14/23	64	115	1
24 183 27 ¹	100	29/32	14/23	64	115	1
24 183 36 ¹	250	24/29	14/23	85	145	1
24 183 37	250	29/32	14/23	85	145	1
24 183 44 ¹	500	24/29	14/23	105	175	1
24 183 46	500	29/32	14/23	105	175	1
24 183 54 ¹	1 000	24/29	14/23	131	210	1
24 183 56	1 000	29/32	14/23	131	210	1
24 183 63	2 000	29/32	14/23	166	260	1

¹ Nicht nach DIN

¹ Non-DIN size

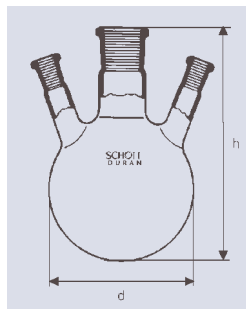
¹ Taille spéciale, non conforme aux dimensions DIN

¹ Tamaño especial, no según DIN



Dreihals-Rundkolben
mit Normschliffen,
Seitenhalse schräg

**Flasks, round bottom,
three necks, with
standard ground sockets,
side necks angled**



**Ballons à fond rond à
trois cols, avec joints à
rodage standard, cols
latéraux obliques**

**Matraces fondo
redondo, con tres
bocas, con esmerilados
normalizados, bocas
laterales inclinadas**

Best.-Nr. Cat. No.	Inhalt Capacity ml	Mittelhals NS Centre socket size	Seitenhals NS Side socket size	d mm	h mm	Originalpckg./Stück Stand. pack/quantity
24 188 27	100	29/32	14/23	64	115	1
24 188 36	250	24/29	14/23	85	145	1
24 188 37	250	29/32	14/23	85	145	1
24 188 43	500	24/29	14/23	105	175	1
24 188 46	500	29/32	14/23	105	175	1
24 188 53	1 000	24/29	14/23	131	210	1
24 188 55	1 000	29/32	14/23	131	210	1